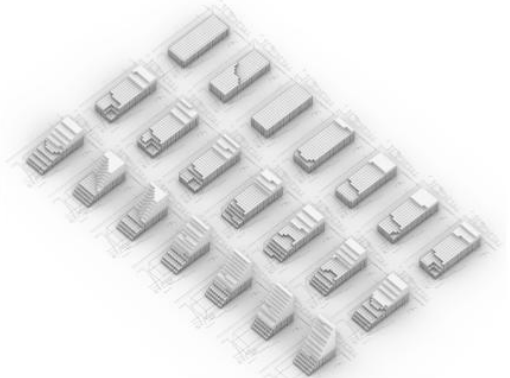
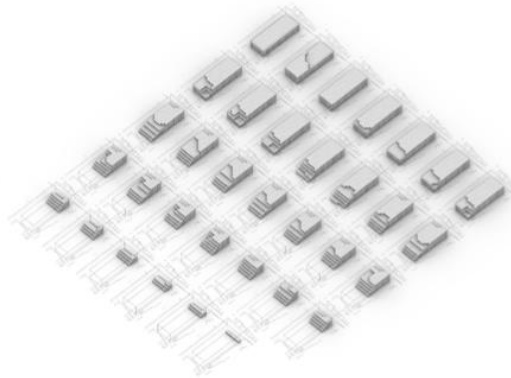
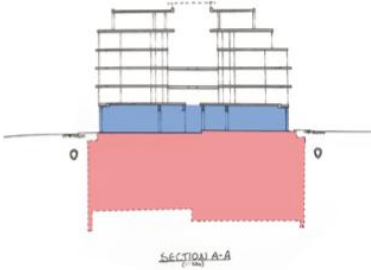


Analysing the ground excavation and sub structure construction in depth, the realization occurs that the overall process of excavation, (consisting of harnessing the forces at play whilst removing and transporting the excavated material/waste from site) generates a less valuable space in comparison to the other spaces within a building. The subterranean level mostly includes either foundation or basements, plant rooms, storage, parking etc.

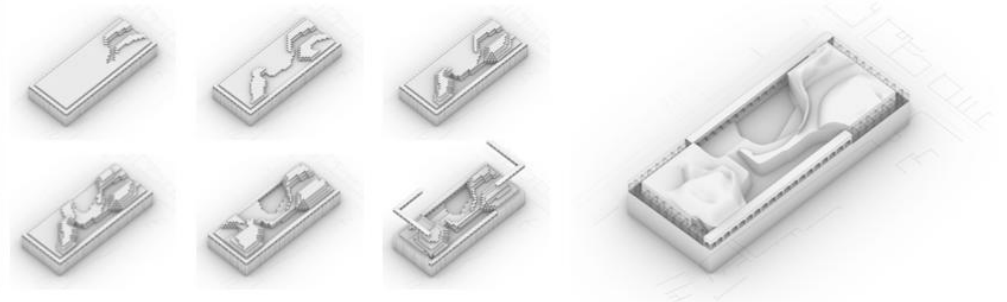
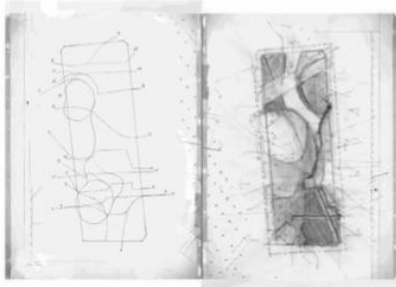
Continuing from the previous notion and trying to come up with a more economical way of excavating that simultaneously generates a more interesting, useful, pleasureable and habitable underground space.

Diagrams highlighting the volume of matter removed from site.

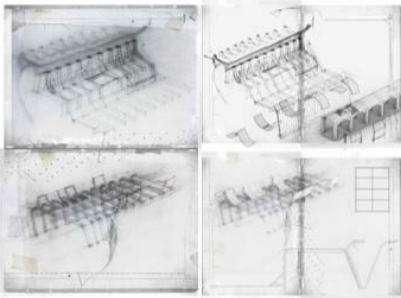
Different way of excavating: First excavating less and making sure no soil leaves the site...



and then applying same scheme but trying to form spaces by moving and placing excavated soil in different areas on site...



First attempts/sketches of forming a habitable foundation...



Inspired by temporary structures such as raking struts and basement shoring...

These high-tech structures were altered to form enclosures.

