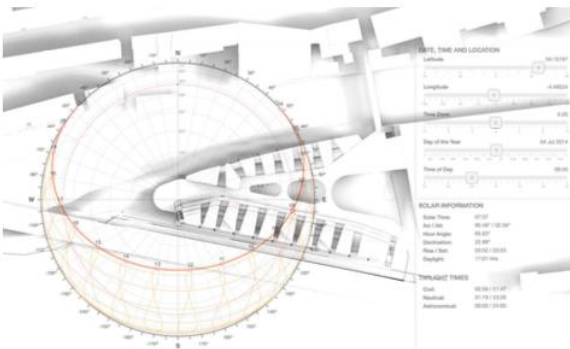


The residential projects storeys are not placed directly on top of each other. Creating a terraced tectonic to allow maximum sunlight into the underground area below through the use of columns inspired by the Brunswick Centre in Russel Square.

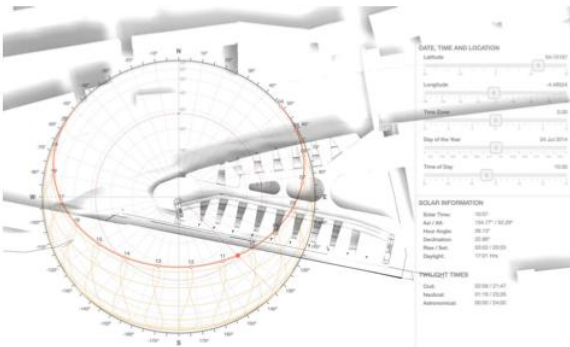
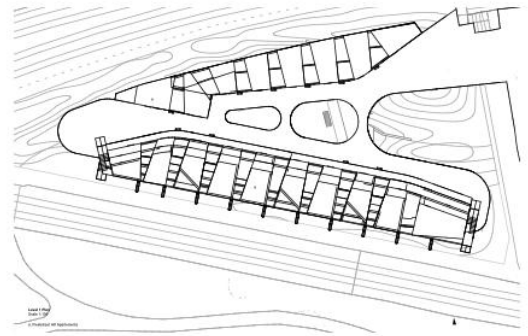
← N S →

Cross Section
Scale 1:100



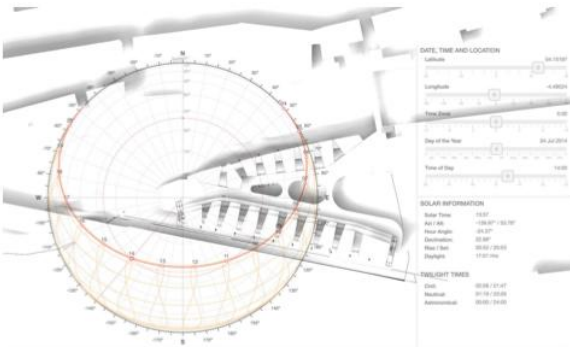
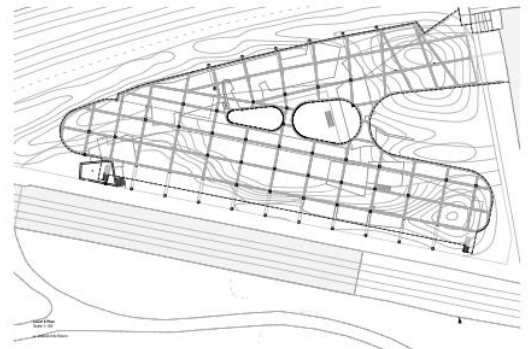
Sun-Path diagram tests with 3D model to see how the site and proposal responded to sunlight and to find out how to permeate transfer slab to allow solar gain into foundation pit level.

Spherical Sun-Path, light and shadows
Time: 08:00 Day: 4 July

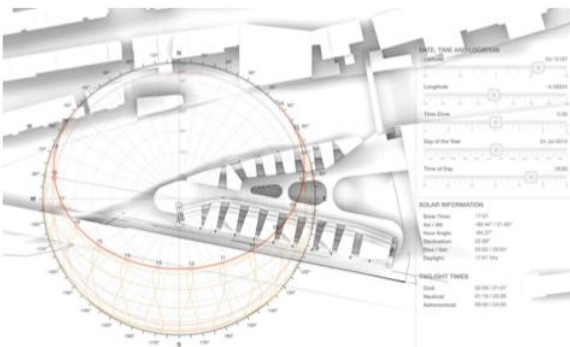
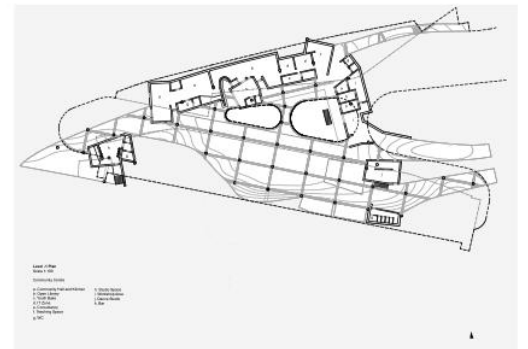


Underground program and spaces were organized according to site constraints and how sun light infiltrated through the above development.

Spherical Sun-Path, light and shadows
Time: 10:30 Day: 4 July



Spherical Sun-Path, light and shadows
Time: 14:00 Day: 4 July



Spherical Sun-Path, light and shadows
Time: 18:00 Day: 4 July

